



AR-β2 Polyclonal Antibody

Catalog No	YP-Ab-13713
Isotype	IgG
Reactivity	Human;Mouse;Rat
Applications	WB;ELISA
Gene Name	ADRB2
Protein Name	Beta-2 adrenergic receptor
Immunogen	Synthesized peptide derived from AR-β2 . at AA range: 300-380
Specificity	AR-β2 Polyclonal Antibody detects endogenous levels of AR-β2 protein.
Formulation	Liquid in PBS containing 50% glycerol, 0.5% BSA and 0.02% sodium azide.
Source	Polyclonal, Rabbit,IgG
Purification	The antibody was affinity-purified from rabbit antiserum by affinity-chromatography using epitope-specific immunogen.
Dilution	Western Blot: 1/500 - 1/2000. ELISA: 1/5000. Not yet tested in other applications.
Concentration	1 mg/ml
Purity	≥90%
Storage Stability	-20°C/1 year
Synonyms	ADRB2; ADRB2R; B2AR; Beta-2 adrenergic receptor; Beta-2 adrenoreceptor; Beta-2 adrenoceptor
Observed Band	46kD
Cell Pathway	Cell membrane ; Multi-pass membrane protein . Early endosome . Golgi apparatus . Colocalizes with VHL at the cell membrane (PubMed:19584355). Activated receptors are internalized into endosomes prior to their degradation in lysosomes (PubMed:20559325). Activated receptors are also detected within the Golgi apparatus (PubMed:27481942). .
Tissue Specificity	Blood,Brain,Fetal brain,Heart,Leukocyte,Prostate,Thyroid,
Function	disease:Polymorphic forms of ADRB2 could impart some form of nocturnal asthma.,function:Beta-adrenergic receptors mediate the catecholamine-induced activation of adenylate cyclase through the action of G proteins. The beta-2-adrenergic receptor binds epinephrine with an approximately 30-fold greater affinity than it does norepinephrine.,PTM:Palmitoylated; may reduce accessibility of Ser-345 and Ser-346 by anchoring Cys-341 to the plasma membrane. Agonist stimulation promotes depalmitoylation and further allows Ser-345 and Ser-346 phosphorylation.,PTM:Phosphorylated by PKA and BARK upon agonist stimulation, which mediates homologous desensitization of the receptor. PKA-mediated phosphorylation seems to facilitate phosphorylation by BARK. Phosphorylated upon DNA damage, probably by ATM or ATR.,PTM:Phosphorylation of Tyr-141 is induced by insulin and leads to



supersensitization of the recep

Background

This gene encodes beta-2-adrenergic receptor which is a member of the G protein-coupled receptor superfamily. This receptor is directly associated with one of its ultimate effectors, the class C L-type calcium channel Ca(V)1.2. This receptor-channel complex also contains a G protein, an adenylyl cyclase, cAMP-dependent kinase, and the counterbalancing phosphatase, PP2A. The assembly of the signaling complex provides a mechanism that ensures specific and rapid signaling by this G protein-coupled receptor. This gene is intronless. Different polymorphic forms, point mutations, and/or downregulation of this gene are associated with nocturnal asthma, obesity and type 2 diabetes. [provided by RefSeq, Jul 2008],

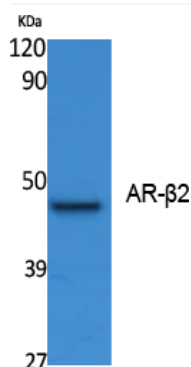
matters needing attention

Avoid repeated freezing and thawing!

Usage suggestions

This product can be used in immunological reaction related experiments. For more information, please consult technical personnel.

Products Images



Western Blot analysis of extracts from K562 cells, using AR-β2 Polyclonal Antibody. Secondary antibody(catalog#:RS0002) was diluted at 1:20000